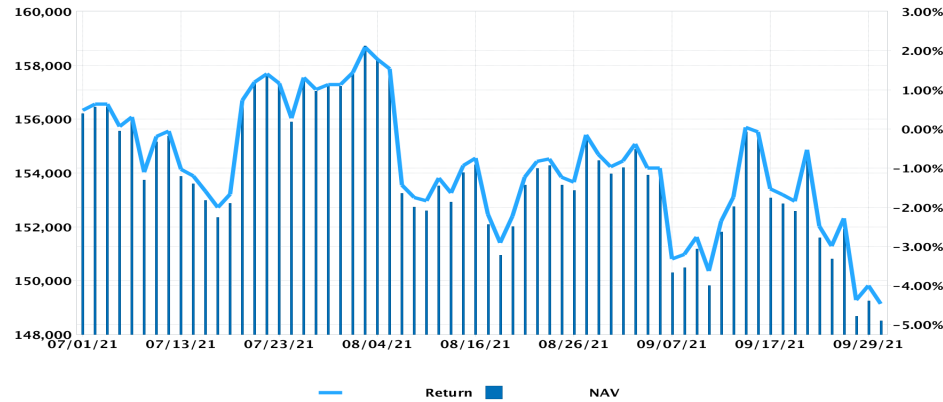


**NAME:**  
**ACCOUNT:**  
**ACCOUNT TYPE:** Joint (Advisor Client)

**INVESTMENT ADVISOR:** Emerge Management Inc.  
**INVESTMENT OBJECTIVES:** Trading, Speculation  
**PERFORMANCE MEASURE:** TWR  
**BASE CURRENCY:** USD

### Net Asset Value

### Cumulative Return



### Key Statistics

**-4.47%**  
**CUMULATIVE RETURN**  
 07/01/21 - 09/30/21

**2.43%**  
**BEST RETURN**  
 07/20/21

**-2.92%**  
**WORST RETURN**  
 08/06/21

<b>Beginning NAV:</b>	<b>155,463.58</b>	<b>Max Drawdown</b>	6.43%
Deposits/Withdrawals:	0.00	<b>Peak-To-Valley</b>	08/03/21 - 09/30/21
<b>Ending NAV:</b>	<b>148,514.22</b>	<b>Sharpe Ratio</b>	-1.14
		<b>Standard Deviation</b>	0.92%

### Allocation

Financial Inst.	Long	(%)
ETFs	70,704.52	47.60
Cash	47,013.84	31.65
Stocks	30,820.72	20.75
<b>Total</b>	<b>148,539.08</b>	<b>100.00</b>

Financial Inst.	Short	(%)
Cash	-24.86	100.00
<b>Total</b>	<b>-24.86</b>	<b>100.00</b>

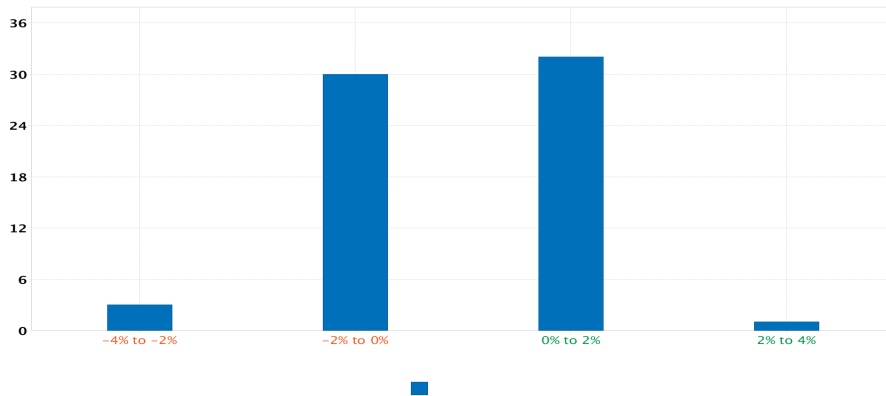
Asset Class	Long	(%)
Cash	47,013.84	31.65
Fixed Income	38,027.16	25.60
Commodities	32,677.36	22.00
Equities	30,820.72	20.75
<b>Total</b>	<b>148,539.08</b>	<b>100.00</b>

Asset Class	Short	(%)
Cash	-24.86	100.00
<b>Total</b>	<b>-24.86</b>	<b>100.00</b>

Sector	Long	(%)
Cash	47,013.84	31.65
Broad	38,027.16	25.60
Basic Materials	32,677.36	22.00
Consumer Cyclical	30,820.72	20.75
<b>Total</b>	<b>148,539.08</b>	<b>100.00</b>

Sector	Short	(%)
Cash	-24.86	100.00
<b>Total</b>	<b>-24.86</b>	<b>100.00</b>

### Distribution of Returns



**IMPORTANT NOTE:**  
 This portfolio analysis was generated using Interactive Brokers' PortfolioAnalyst tool, which allows Interactive Brokers clients to generate analyses of their accounts using market data provided by third parties along with trade and account data contained in Interactive Brokers' systems. This analysis is for information purposes only and is provided AS IS. Interactive Brokers makes no warranty of any kind, express or implied, as to this report analysis and its contents. The data provided for use in this Portfolio Analysis is believed to be accurate but completeness and accuracy of the information is not guaranteed, and Interactive Brokers has no liability with respect thereto. The data regarding accounts held outside of Interactive Brokers is obtained either directly from you or from the financial institutions holding those accounts through a third-party service provider and Interactive Brokers has not reviewed its accuracy.

This material in this analysis is intended only as a reference and should not be relied upon for the maintenance of your books and records for tax, accounting, financial, or regulatory reporting or for any other purposes. This analysis is not an offer or a solicitation of an offer to buy or sell any security. This material does not and is not intended to take into account the particular financial conditions, investment objectives or requirements of individual customers. Before acting on this material, you should consider whether it is suitable for your particular circumstances and, as necessary, seek professional advice.

This page intentionally left blank.

Interactive Brokers LLC, Two Pickwick Plaza, Greenwich, CT 06830

**Account Information**

Account Holder(s)	
Address of Account Holder(s)	
Account Number	
Investment Advisor	Emerge Management Inc.
Address of Investment Advisor	Sir Francis Drake*s Highway, 3076 Road Town Tortola, VG1110 British Virgin Islands
Customer Type	Joint
Account Capabilities	Margin
Base Currency	USD
Your Investment Objectives <sup>1</sup>	Trading,Speculation

**Notes**

- Please carefully review the investment objectives and other information listed above for your account and notify the Interactive Brokers Customer Service Department (see below) if anything is incorrect or if anything changes. These investment objectives are explained below.

Below for your convenience is a summary of the activity in your Interactive Brokers Account for the dates indicated. Please note that this summary is not a substitute for your account statement and does not include a listing of each transaction in your account during the dates covered. To review daily or monthly account statements, please login to Account Management on the Interactive Brokers website.

**Net Asset Value**

	June 30, 2021		September 30, 2021			Change	Change in NAV	
	Total		Long	Short	Total			Total
Cash	41,364.86		47,013.84	0.00	47,013.84	5,648.98	Starting Value	155,463.58
Stock	114,218.19		101,525.24	0.00	101,525.24	-12,692.95	Mark-to-Market	-6,675.05
Interest Accruals	-119.47		0.00	-24.86	-24.86	94.61	Dividends	90.14
<b>Total</b>	<b>155,463.58</b>		<b>148,539.08</b>	<b>-24.86</b>	<b>148,514.22</b>	<b>-6,949.36</b>	Withholding Tax	-27.05
<b>Time Weighted Rate of Return</b>						<b>-4.47%</b>	Interest	-272.66
							Change in Interest Accruals	94.61
							Commissions	-159.35
							Ending Value	148,514.22

## Open Positions

Symbol	Quantity	Mult	Cost Price	Cost Basis	Close Price	Value	Unrealized P/L	Code
<b>Stocks</b>								
<b>USD</b>								
LEN	329	1	83.6795065	27,530.56	93.6800	30,820.72	3,290.16	
TMF	1,447	1	28.809455	41,687.28	26.2800	38,027.16	-3,660.12	SY
UCO	388	1	72.1340909	27,988.03	84.2200	32,677.36	4,689.33	SY
<b>Total</b>				<b>97,205.87</b>		<b>101,525.24</b>	<b>4,319.37</b>	

### Notes

- Code SY: Positions that may be eligible for Stock Yield. Potential for additional annualized income of 331.87 USD

## Trade Summary by Symbol

Symbol	Quantity	Buys		Sells		
		Avg. Price	Proceeds	Quantity	Avg. Price	Proceeds
<b>Stocks</b>						
<b>USD</b>						
AMTX	0	0.00	0.00	-1,413	9.64	13,626.37
BHR	0	0.00	0.00	-1,772	6.18	10,947.78
GTBP	0	0.00	0.00	-548	9.36	5,129.72
JO	341	57.66	-19,661.91	-341	53.71	18,316.57
NIB	663	28.82	-19,109.78	-305	28.87	8,804.04
SOYB	1,456	23.32	-33,953.30	-1,456	23.24	33,842.56
SPXL	2,003	112.56	-225,463.16	-2,003	113.92	228,176.17
SPXS	4,103	21.30	-87,378.85	-4,103	20.96	85,996.42
TMF	1,447	28.80	-41,680.05	-1,257	27.43	34,478.79
TQQQ	265	143.25	-37,961.71	-265	147.12	38,987.35
UCO	1,281	76.16	-97,564.69	-591	73.54	43,464.13
UDOW	0	0.00	0.00	-642	75.22	48,288.62
UGL	2,195	58.93	-129,340.66	-2,195	58.35	128,073.49
<b>Total</b>			<b>-692,114.10</b>			<b>698,132.01</b>

## Other Information

Interactive Brokers LLC is the clearing and carrying broker for your account. Interactive Brokers LLC is a member of the Securities Investor Protection Corporation (SIPC), the Financial Industry Regulatory Authority (FINRA) and the National Futures Association (NFA).

**Your account is managed by an independent Financial Advisor selected by you. Your Advisor is not employed by, an agent of, affiliated with, or recommended by Interactive Brokers. It is your sole responsibility to conduct due diligence with respect to, and monitor the investment decisions or instructions of your Advisor. It is also your sole responsibility to determine whether your Advisor is appropriate for you and acting consistent with your instructions. Interactive Brokers does not review or supervise the suitability of your Advisor's investment decisions. Interactive Brokers is not liable for, and you have broadly agreed to indemnify it against all claims relating to the activities of your Advisor.**

Our records show the following information for your Advisor:

Financial Advisor: Emerge Management Inc.

Advisor Fees Being Deducted: No advisor fees are being deducted by Interactive Brokers for your advisor for advice provided to this account.

If you have any questions about this Quarterly Activity Summary, please contact your Financial Advisor.

To report any problem or inaccuracy or discrepancy in this statement, or in your account, please contact the Interactive Brokers Customer Service Department at the Interactive Brokers website [www.interactivebrokers.com](http://www.interactivebrokers.com) or call: Interactive Brokers LLC, 877-442-2757.

## Explanation of Investment Objectives

Objective	Description
Growth	Increase the principal value of your investments over time rather than seeking current income. Investor assumes higher degree of risk.
Hedging	Take positions in a product in order to hedge or offset the risk in another product.
Income	Generate dividend, interest or other income instead of, or in addition to, seeking long-term capital appreciation.
Preservation	Seek maximum safety and stability for your principal by focusing on securities and investments that carry a low degree of risk.
Speculation	Substantially increase the principal value of your investments by assuming substantially higher risk to your investment capital.
Trading	Increase the principal value of your investments by using shorter term trading strategies and by assuming higher risk.

## Codes

Code	Meaning	Code (Cont.)	Meaning (Cont.)
A	Assignment	LI	Last In, First Out (LIFO) tax basis election
ADR	ADR Fee Accrual	LT	Long Term P/L
AEx	Automatic exercise for dividend-related recommendation.	Lo	Direct Loan
Adj	Adjustment	M	Entered manually by Broker
AI	Allocation	MEx	Manual exercise for dividend-related recommendation.
Aw	Away Trade	ML	Maximize Losses tax basis election
B	Automatic Buy-in	MLG	Maximize Long Term Gain tax basis election
Bo	Direct Borrow	MLL	Maximize Long Term Loss tax basis election
C	Closing Trade	MSG	Maximize Short Term Gain tax basis election
CD	Cash Delivery	MSL	Maximize Short Term Loss tax basis election
CP	Complex Position	O	Opening Trade
Ca	Cancelled	P	Partial Execution
Co	Corrected Trade	PI	Price Improvement
Cx	Part or all of this transaction was a Crossing executed as dual agent by Broker for two Broker customers	Po	Interest or Dividend Accrual Posting
ETF	ETF Creation/Redemption	Pr	Part or all of this transaction was executed by the Exchange as a Crossing by Broker against a Broker affiliate and is therefore classified as a Principal and not an agency trade
Ep	Resulted from an Expired Position	R	Dividend Reinvestment
Ex	Exercise	RED	Redemption to Investor
FP	IB acted as agent for the fractional share portion of this trade, which was executed by an IB affiliate as principal.	RP	IB acted as agent for the fractional share portion of this trade, which was executed by an IB affiliate as riskless principal.
FPA	IB acted as agent for both the fractional share portion and the whole share portion of this trade; the fractional share portion was executed by an IB Affiliate as principal.	RPA	IB acted as agent for both the fractional share portion and the whole share portion of this trade; the fractional share portion was executed by an IB Affiliate as riskless principal.
G	Trade in Guaranteed Account Segment	Re	Interest or Dividend Accrual Reversal
HC	Highest Cost tax basis election	Ri	Reimbursement
HFI	Investment Transferred to Hedge Fund	SI	This order was solicited by Broker
HFR	Redemption from Hedge Fund	SL	Specific Lot tax basis election
I	Internal Transfer	SO	This order was marked as solicited by your Introducing Broker
IA	This transaction was executed against a Broker affiliate	SS	Customer designated this trade for shortened settlement and so is subject to execution at prices above the prevailing market
INV	Investment Transfer from Investor	ST	Short Term P/L
IPO	This transaction was executed as part of an IPO in which IB was a member of the selling group and is classified as a Principal trade.	SY	Positions that may be eligible for Stock Yield. Potential for additional annualized income of 331.87 USD
L	Ordered by Broker (Margin Violation)	T	Transfer
LD	Adjusted by Loss Disallowed from Wash Sale	Un	Invested shares from stock grant